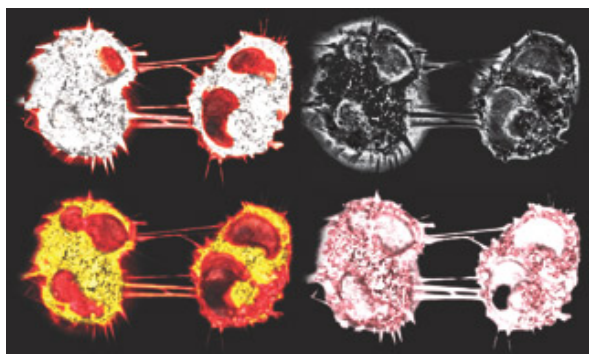


# Institut Pasteur COURSE

## Molecular Biology of the Cell

Paris, January 12 to February 6, 2015



### Dr Roberto BRUZZONE

HKU-Pasteur Research Pole, School of Public Health,  
The University of Hong Kong, Hong Kong SAR

### Dr Philippe CHAVRIER

CNRS UMR 144, Research Section, Institut Curie, Paris

### Dr Chiara ZURZOLO

Membrane Traffic and Pathogenesis Unit,  
Institut Pasteur, Paris,

This is an intensive laboratory and lecture course devoted to new experimental techniques and current concepts in the study of cellular function.

Topics include: functional organization of the cell, polarity and membrane traffic; cell division, migration and invasion; stem cells, cell-pathogen interactions; autophagy, metabolism and cancer; model organisms; quantitative imaging analysis.

The practical sessions will provide hands-on training in related areas and will introduce students to cutting edge techniques of live cell imaging.

**Fellowships (1500 euros each) will be granted to the 3 best applicants from foreign countries to cover, in part, their travel and accommodation expenses.**

### Confirmed speakers:

**Arnaud Echard (Institut Pasteur)**

**Darren Gilmour (EMBL, Germany)**

**Gillian Griffiths (University of Cambridge, UK)**

**Tom Kirchhausen (Harvard Medical School, USA)**

**Michel Labouesse (IGBMC, France)**

**Helder Maiato (IBMC, Portugal)**

**Vivek Malhotra (CRG, Spain)**

**Fernando Martin-Belmonte (CBMSO, Spain)**

**Roberto Mayor (UCL, UK)**

**Jean-Christophe Olivo-Marin (Institut Pasteur, France)**

**Frank Perez (Institut Curie, France)**

**Matthieu Piel (Institut Curie, France)**

**Scotty Robinson (University of Cambridge, UK)**

**Sumana Sanyal (HKU-Pasteur Research Pole, Hong Kong)**

**Nathalie Sauvonnet (Institut Pasteur, France)**

**Giampietro Schiavo (UCL, UK)**

see more at:

[www.pasteur.fr/course/cell](http://www.pasteur.fr/course/cell)

**Closing date for application :**  
**September 5, 2014**

[www.pasteur.fr/inscription/](http://www.pasteur.fr/inscription/)

25-28 RUE DU DOCTEUR ROUX  
75015 PARIS  
FRANCE

